

## Atosa MSF8302GR Heavy Duty 2 Door Prep Counter 379 Litres with 6 x 1/3 Pans



Part of Atosa's heavy duty range, the MSF8302GR Double Door Refrigerated Prep Table performs in an ambient temperature of up to 43°C, making it suitable for the busiest kitchen, sandwich shop or pizzeria. Its exterior and interior are made up of high grade stainless steel. 6 x 1/3 GN Pans supplied as standard, they are 100 mm deep.

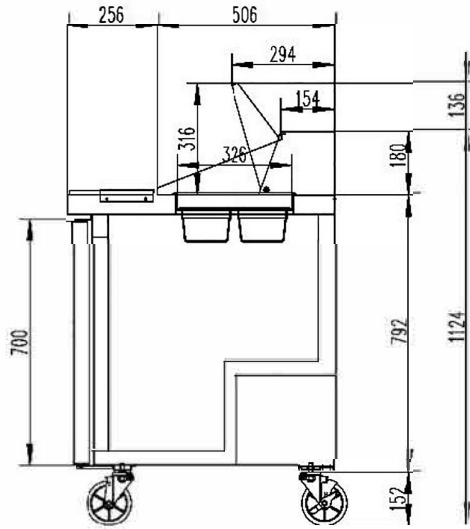
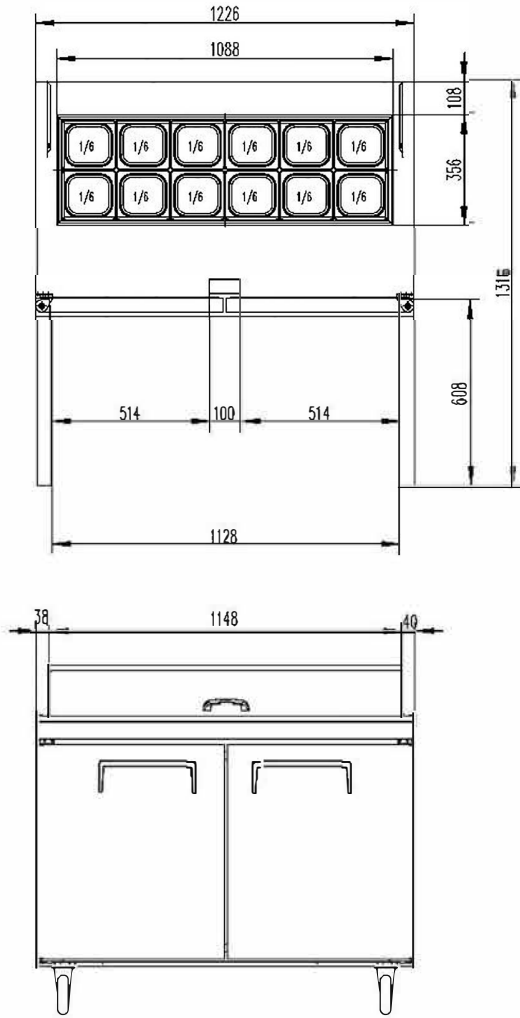
- ✓ High Grade Stainless Steel Construction Interior
- ✓ High Grade Stainless Steel Construction Exterior
- ✓ Gastro pans fitted as standard
- ✓ Easy to clean black plastic door handle
- ✓ Splash proof cover to control panel
- ✓ Climate Class 5 product
- ✓ Optional marble tops
- ✓ Rear Mounted Compressor
- ✓ Self-closing and stay open door
- ✓ Air trickle vents over gastro pans
- ✓ Magnetic door gaskets
- ✓ Pre-installed castors
- ✓ Pre-installed shelves
- ✓ Optional crumb catchers

### SPECIFICATIONS

Summary		Power and Performance	
<b>Brand</b>	Atosa	<b>Voltage (V/HZ/PH)</b>	220/50/1
<b>Model</b>	MSF8302GR	<b>Power (Watts)</b>	370
<b>Material External</b>	Stainless Steel	<b>Electrical Current (Amps)</b>	2.6
<b>Material Internal</b>	Stainless Steel	<b>Power Consumption (kW 24Hrs)</b>	2.2
<b>Shelf Quantity</b>	2		
<b>Lighting</b>	No		
<b>Door lock</b>	No		

Key Specifications		Weights and Dimensions	
<b>Climate Class</b>	5	<b>Exterior Dimension (WxDxH) mm</b>	1225 x 763 x 1124
<b>Defrost Method</b>	Air Defrost	<b>Interior Dimension (WxDxH) mm</b>	1135 x 598 x 677
<b>Refrigerant Type / Amount</b>	R600a / 110g	<b>Packing Dimension (WxDxH) mm</b>	1295 x 851 x 1186
<b>Cooling Method</b>	Ventilated	<b>Shelf Dimensions mm</b>	547 x 448
<b>Inner Temperature (°C)</b>	+2°C to +8°C	<b>Net Weight (kg)</b>	110
<b>Insulation</b>	Polyurethane Foam	<b>Gross Weight (kg)</b>	120
<b>Foaming Material</b>	C5H10	<b>Shelf Loading Capacity (kg pc)</b>	40
<b>Castors</b>	4 (2 Braked on Front)		
<b>Capacity (Litre)</b>	379		

MSF8302



SIDE VIEW